

COFFEE BOARD: BENGALURU
Daily Coffee Market Report Wednesday, October 26, 2016

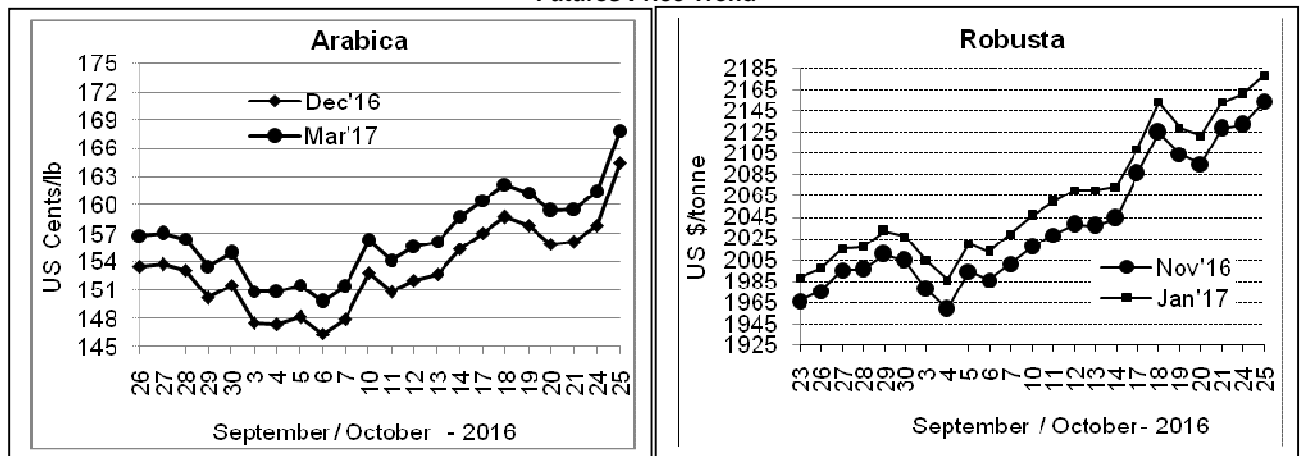
Futures Prices 25.10.2016					
ICE (New York)- Arabica- US cents / lb			LIFFE(London) – Robusta -US \$ / tonne and cents / lb in brackets (10 MT contract)		
Month	Price	Prev. Price	Month	Price	Prev. Price
Dec – 2016	164.50	157.90	Nov – 2016	2153 (97.66)	2132 (96.71)
Mar – 2017	167.90	161.40	Jan – 2017	2178 (98.79)	2161 (98.02)
May – 2017	170.00	163.65	Mar – 2017	2176 (98.70)	2161 (98.02)

ICO Group Indicator price on 24.10.2016 and previous price in brackets

Other Mild Arabica		Robusta	
US Cents/lb	Rs/kg	US Cents/lb	Rs/kg
181.20 (179.52)	267.17 (264.61)	106.27 (106.05)	156.69 (156.32)

Exchange Rate Rs/ US \$
66.88

Futures Price Trend



Market Analysis

ICE arabica coffee leapt to 20-month highs on fund buying and currency gyrations. ICE December arabica coffee futures vaulted to a 20-month high of \$1.6475 per lb before closing up 6.6 cent, or 4.18 percent, at \$1.645. ICE robusta coffee hit a fresh two-year high on Tuesday as fears of a delayed harvest in top producer Vietnam reinforced concern of a world deficit. January robusta coffee futures settled up \$17, or 0.79 percent, at \$2,178 per tone.

Differentials:	Ar. Plant. A	Ar.Chy.AB	Rob.Pmt.AB	Rob.Chy.AB
	NY +0 to +5	NY –30 to –35	LIFFE +425 to +500	LIFFE +150 to +180

ICTA Auction Prices Rs/Kg as on 20.10.2016 (2015-16 season crop)

Grade	MNEB	AA	PB	A	AB	B	C	BBB
Arabica Plantation	---	---	221.26	---	---	208.00	---	144.56
Arabica Cherry	---	---	183.60	---	---	---	145.00	---
	RKR	A	PB	AA	AB	B	C	BBB
Robusta Parchment	---	---	---	---	---	---	---	128.50
Robusta Cherry	---	---	146.50	150.66	148.00	---	140.50	126.50

Raw Coffee Price (Karnataka) as on 25.10.2016 in Rs/50 kg

Ar.Pmt	Ar.Chy	Rob.Pmt	Rob.Chy
8350 - 8700	3925 - 4200	5800 - 6275	3400 - 3575

Export update: From 1st January 2016 to 25th October 2016 (in metric tonnes)

	INDIAN COFFEE	Ar.Pmt	Ar.Chy	Rob.Pmt	Rob.Chy	Roasted seeds	R & G	Instant	Total
1	Provisional exports (Indian coffee)	36352	10011	25546	148760	45	194	20907	241815
2	Provisional exports corresponding period last year	28949	9034	30441	113823	33	238	24292	206811
3	Provisional re-exports	0	0	0	0	1	157	62389	62547
4	Provisional re-exports corresponding period last year	0	0	0	0	119	268	50803	51190
5	Total provisional exports (1+3)	36352	10011	25546	148760	46	351	83296	304362
6	Total provisional exports corresponding period last year (2+4)	28949	9034	30441	113823	152	506	75095	258000

Disclaimer: The Board neither guarantees the accuracy of the information nor accept any liability whatsoever for any direct or consequential loss arising from the use of this report